

COMMUNITY IMPACT REPORT 2015-2016



The **FOUNDATION** For Seminole County Public Schools

Securing private investment for initiatives that
create a brighter future for SCPS students and faculty



COMMUNITY IMPACT REPORT 2015-2016

Dear Champion of Education,

We are proud and humbled to have so many friends rolling up their sleeves to support students and faculty of SCPS through The Foundation.

Although private investment of \$3.5 million through The Foundation may seem small compared to SCPS's \$750 million budget, it goes a long way in funding innovation in learning that goes beyond public funding levels or that can't be paid for through public funds. Your support ensures more graduates leave our district with meaningful diplomas and a clear pathway to high-demand, high-wage employment.

This annual impact report is provided to show how we serve as catalyst, connector and champion for our community's premier, national school district. Thank you for investing in a brighter future for our students, for SCPS and for the overall vitality of Seminole County!

Yours in Service,



Patrick Buchanan

Patrick Buchanan
Board Chairman



Davia Moss

Davia Moss
Executive Director



Superintendent Griffin, Teacher Suzette Swallow, Principal Robert Navarro and Volunteer Margy Miskel at "Mardi Gras Morning" Community Open House at A Gift for Teaching - Seminole

The Foundation is our direct-support charity. They are instrumental in bringing resources to the table that drive innovative new learning initiatives, empower our high need students, and allow for continuous improvement in underperforming areas.

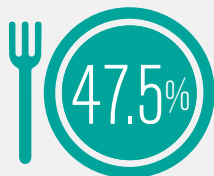
- Walt Griffin Ed.D., SCPS Superintendent



COMMUNITY IMPACT REPORT 2015-2016

Snapshot of Seminole County Public Schools

68,789 students

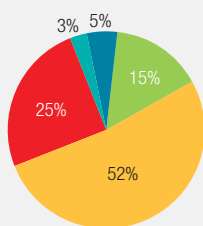


students qualify for free/reduced meals

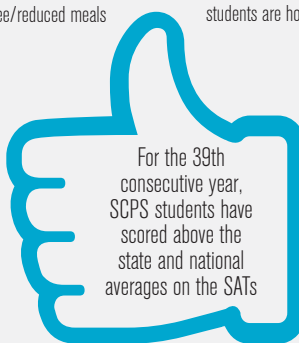


students are homeless or in crisis

Demographic make-up of students



■ Asian
■ Black
■ White
■ Hispanic
■ Multiracial



For the 39th consecutive year, SCPS students have scored above the state and national averages on the SATs

Foundation Impact

Secured and distributed
\$1.8 million in
TOOLS ⁴ SEMINOLE SCHOOLS
← SUPPLIES FOR STUDENTS IN NEED →

free school supplies to benefit teachers and students in need.

Funded **\$425,000** in classroom and project grants to SCPS.

Invested **\$650,000** to remove barriers and empower high-need, at-risk students.

Distributed **\$128,000** in Arts Alive funds, enhancing the arts curriculum in every school in the district.

Invested **\$100,000** in teachers, support staff and key volunteers – as our human capital is critical in driving our premier national school district.

Awarded **\$30,000** in senior scholarships to 24 graduating seniors.



“Thanks to the support I received from Foundation-funded programs, I have overcome challenges in my life and have earned a Florida Prepaid college scholarship to Seminole State College. Thanks to The Foundation, my future is looking bright!”

- Reginald Stapler, Take Stock in Children Class of 2013 Scholar with Pastor Barnes, Macedonia Missionary Baptist Church



COMMUNITY IMPACT REPORT 2015-2016

Statement of Financial Position

	2016	2015
REVENUES AND SUPPORT		
Sunlight giving grant	\$ -	\$4,000,000
Program support	1,106,183	1,362,592
Donated teaching supplies (gift for teaching)	1,901,454	1,820,767
Fund raising events	394,316	397,977
Unrealized gain from scholarships	79,076	51,992
Investment income (loss)	(38,488)	102,512
Other income	1,111	3,265
Total revenues and support	3,443,652	7,739,105

EXPENSES		
Program services:		
Sunlight giving grant	2,635,360	1,364,640
Other programs	3,153,954	3,339,552
Support services:		
Fund raising	178,319	234,350
General and administrative	244,044	234,971
Total expenses	6,211,677	5,173,513
Change in net position	(2,768,025)	2,565,592
Net position, beginning of year	7,459,109	4,893,517
Net position, end of year	*\$4,691,084	\$ 7,459,109

• \$2,635,360 of a \$4,000,000 grant received in 2014-2015 was disbursed in 2015-2016.

STATEMENT OF NET ASSETS	
Assets:	
Current assets	3,343,708
Noncurrent assets	1,438,679
Total Assets:	4,782,387
Total Liabilities:	
Accounts Payable/Other	91,303
Net Position Unrestricted:	
Undesignated	269,014
Board designated	40,334
Net Position Restricted:	
Expendable	2,671,911
Non-expendable	1,709,825
TOTAL NET POSITION:	4,691,084

Excellence in Education Endowment

Fund Balance: \$1,646,013

Scholarship Endowment

Fund Balance: \$63,802

Give to Create a Brighter Future for our Students

Our SCPS family makes a strong statement by donating over \$100,000 themselves to The Foundation annually. Here's how you can join them...


- Make an annual gift to The Foundation's Unrestricted Fund – empowering SCPS to recognize notable faculty achievements, make quick changes and roll out new initiatives in response to underperforming areas.
- Contribute to the Excellence in Education Endowment Fund or establish an endowment fund in honor of a loved one. Endowed funds are invested which enhance The Foundation's fiscal stability and allow for program expansion.
- Make provisions in your Will or Estate Plan. Bequests from wills, trusts, and retirement plans allow your legacy to live on in support of future generations of Seminole County students.
- Leverage your support of SCPS with matching donations by your employer. Contact your human resources office to find out if they have a matching program and how it works.

The **FOUNDATION**
Golf "Fore" Education Tournament
Tournament presented by



INSURANCE OFFICE OF AMERICA
April 3, 2017 at Legacy Club.
www.foundationscps.org/events

Drive Student Success
by purchasing a



CAR TAG.
The Foundation receives a portion of the proceeds.
www.myfloridaspecialtyplate.com/support-education.html

arts alive
in Seminole!

Presented by



South Seminole Hospital

2nd Saturday of November at
Westin Lake Mary.
www.foundationscps.org/events

To make a gift to the Foundation you can mail a check to:
The Foundation for SCPS, 400 East Lake Mary Blvd., Sanford, FL 32773
or give online at
www.foundationscps.org/donate
Call 407.320.0176 if you would like to discuss your gift.

  FOUNDATIONSCPS.ORG | 400 EAST LAKE MARY BLVD., SANFORD, FL 32773 | 407.320.0180

The Foundation for Seminole County Public Schools is a 501(c)(3) non-profit organization, registered with the State of Florida Department of Consumer Affairs. Your donation is tax deductible as provided by law.

The **FOUNDATION**
For Seminole County Public Schools



COMMUNITY IMPACT REPORT 2015-2016

Faces of Philanthropy Honor Roll

Graduate Summa Cum Laude (\$50,000+)

Duke Energy
Heart of Florida United Way
Orlando Sentinel Family Fund, a McCormick Fund
Seminole County Sheriff's Office
State of Florida
SCPS Employee Annual Fund

Graduate Magna Cum Laude (\$25,000+)

Blue Cross Blue Shield of Florida Foundation
CFE Federal Credit Union
Orlando Magic Youth Fund, a McCormick Fund
Seminole County Board of County Commissioners
Wayne Densch Charities

Graduate Cum Laude (\$10,000+)

Bank of America Foundation
Brighthouse Networks
Central Florida Regional Hospital
CenturyLink
Cigna
Insurance Office of America
Lockheed Martin
Modern Plumbing Industries
Orlando Health / South Seminole Hospital
Rotary Clubs of Seminole County
Dede Schaffner
The John and Katherine Duda Foundation
The Ryan Foundation
Stan and Kim VanGundy
Verizon Foundation
Wharton Smith Construction
The Yarmuth Family

Endowed Scholarship Society (\$10,000+)

Ralph Ameduri Jr. Music Scholarship
Barry Gainer Scholarship
Raymond Gaines Scholarship
John Mercer Scholarship
Sam Momary "Tradition of Excellence"
Bill Scott Scholarship

Graduate (\$5,000+)

Karen Almond
CBC of Central Florida
Central Florida Auto Dealers Association
George W. Bush Foundation
Matern Professional Engineering
Matthews Buses
Philip S. Harper Foundation
University of Central Florida
Waste Corporation of America
Welbro Building Corporation
White's Site Development

The Foundation spends
*only 5 cents for
every \$1 we raise.*



Incoming Sheriff Dennis Lemma with Scholars of Take Stock in Children-Seminole, a program of The Foundation.



COMMUNITY IMPACT REPORT 2015-2016

Principal's List (\$2,500+)

Agitech Solutions
Amscot
Amwins Group
Carespot
CH2M
Clancy & Theys Construction
D&A Construction Group
Dell
Fairwinds Credit Union
FPL
Harriett Lake Family Trust
Heathrow Country Club
IBM
Roxanne Jager
Steve and Virginia Kuiper
Moore Stephens Lovelace, P.A.
Superintendent Walt Griffin, Ed.D.
Kevin and Nancy McCarthy
Mark Construction
Maudlin International
Moore Communications Group
Lex and Davia Moss
Music & Arts Centers
PCL Construction Services
Private Wealth Management
Pro-Spec
Sanford Orlando International Airport
Schenkel Shultz
Scholastic Bookfairs
Seminole County Regional Chamber of Commerce
Seminole Uniserv
TECC
The Foundation for Seminole State College
The Miller Realty Group
Todd's Quality Tomatoes
Universal Studios
Walt Disney World
Zimmerman Kiser & Sutcliffe, P.A.

Superintendent's Circle (\$1,000+)

John Ashworth
Serita Beamon
Kelsey Blackadar
Cary and Kelly Berman
Patrick Buchanan
Paul and Jennifer Cipparone
Darin Crafton
Suzanne Dusch
Superintendent Walt Griffin Ed.D.
Tim Harper Ed.D.
Boyd and Heidi Karns
Susan Montanez
Steve and Erin O'Donnell
Patrick and Lynette O'Grady
Richard Read
Heath Ritenour
Brian Sackett
Dede Schaffner
Rich and Margie Sloan



Foundation supported Teacher of the year Celebration made possible by donor support: Middle School Winner, Leslie Antmann; District-wide Winner, Chris Pombonyo; High School Winner, Ashley Barnett.

Honorable Mention (\$1,000+)

Acousti Engineering
Accusured Management
Annunciation Catholic Church
AVID
AXA Advisors
BB&T
BDO USA
Carrie Buelow
CPH
CPPI
Cipparone & Cipparone, P.A.
Convergys
Anna-Marie Cote, Ed.D
Cuhaci & Peterson
Mark and Phyllis Coplan
Data Image Corporation
Dean Stewart Photography
John and Cynthia Deitz
Delta Capital Management
Michael Doukas
Elizabeth Morse Genius Foundation
Fields Motorcars of Florida
Florida Site Services
FSV Payment Systems
Gomez Construction
Michael Good
Harold Hirsch Foundation
Heard Construction
McCree Construction
Mid Florida Credit Union
Morton Electric
Ohio State Alumni Club of Central FL
Paul and Paula Dawson
Stephen Fricke
Paul and Nancy Hagerty
Harbor Community Bank
Iberia Bank
Northland Church
Michael and Lisa Mang
Mitsubishi Hitachi Power Systems
Molina Healthcare
Raymond James
Tina Regan
Roach Family Integrative Medicine
Garry and Sandy Robinson
Karen Ruberti
Seminole Ass. Of School Administrators
Seminole County Retired Educators
Siemens
Skanska
Sprint
Teledyne Oil and Gas
Kiran and Monica Tiperneni
United Methodist Women in Seminole
United Way Suncoast
Vascular Vein Centers
Veritas
Waste Management
Scott Westman
Alan and Wendy Wiginton
Gregory and Pamela Wilson
Danielle Workman
Zimek Technologies
Ziscovich Architects



COMMUNITY IMPACT REPORT 2015-2016

Foundation Board of Directors EXECUTIVE COMMITTEE

Chairman



Patrick Buchanan
President
Private Wealth Management

Chairman Elect



Joe Durso
VP of Public Affairs
CBC of Central Florida

VP Governance &
Immediate Past Chairman



Paul Cipparone
Attorney
Cipparone & Cipparone, P.A.

Treasurer



Lisa Spriggs
Director Administration Services
Seminole County Sheriff's Office

VP Development



Heath Ritenour
CEO
Insurance Office of America

VP Programs



Suzanne Dusch
VP of Marketing
CFE Credit Union

Secretary



Cary Berman
Florida Mortgage Market President
National Bank of Commerce

Members at Large

John Ashworth, Financial Advisor with Morgan Stanley
Wealth Management
Darin Crafton, Vice President for Wharton-Smith Inc.
Joe Deitz, Vice President for Harbor Community Bank
Lisa Donovan, Community Leader
Michael Heald, CPA, Partner with BDO
Brent Hill, General Manager with CenturyLink
Drew Jeter, Senior Vice President with CH2M
John McGoun, Vice President of Shared Services with Veritas
Susan Montanez, Vice President with Wells Fargo
Collier Mullins, Senior Preconstruction Manager with
Welbro Building Corporation
Erin O'Donnell, Community Leader
Shivon Patel, Attorney with The Principal Law Firm
Richard Read, CFO for Central Florida Regional Hospital
Cindy Reed, COO of Orlando Health Heart Institute
Patty Salvatore, Senior Account Executive for Duke Energy
Dede Schaffner, Community Leader

Ex Officio Members

Walt Griffin, Ed.D., Superintendent for Seminole County Public Schools
Sue Carson, President of Seminole Education Association
Beth Dostal, Board Member for Seminole County Council of PTA's

We are proud to say that
our overhead is low...
*7% of our
total revenue!*



COMMUNITY IMPACT REPORT 2015-2016

Foundation Leadership Team



(from left to right)

Susan Zettler
Program Manager

Roderick Henderson
Business Manager

Davia Moss
Executive Director

Becky Miller
A Gift for Teaching Seminole
Store Supervisor

Charneisha Pates
Development Specialist

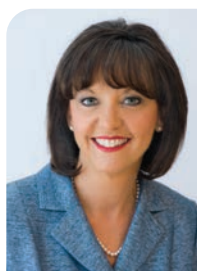
Jennifer Cardenas
Take Stock in Children
Program Supervisor

Leadership of Seminole County Public Schools

SEMINOLE COUNTY SCHOOL BOARD



Amy Lockhart
Chairman



Tina Calderone, Ed.D.
Vice Chairman



Karen Almond



Jeff Bauer



Abby Sanchez



Walt Griffin, Ed.D.
Superintendent



Anna-Marie Cote, Ed.D.
Deputy Superintendent

